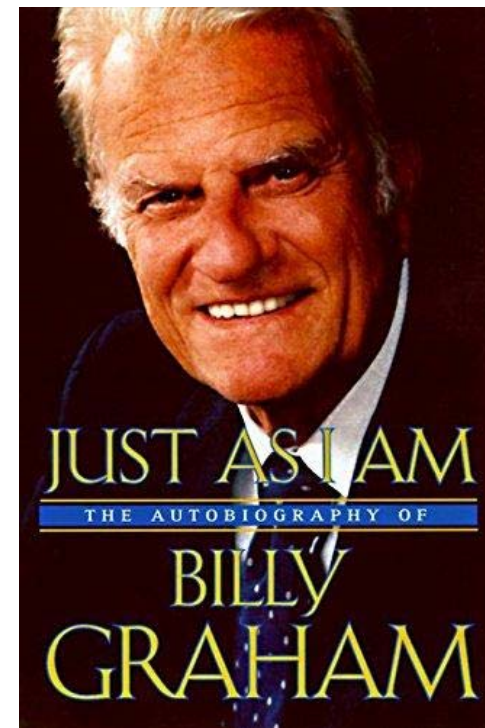
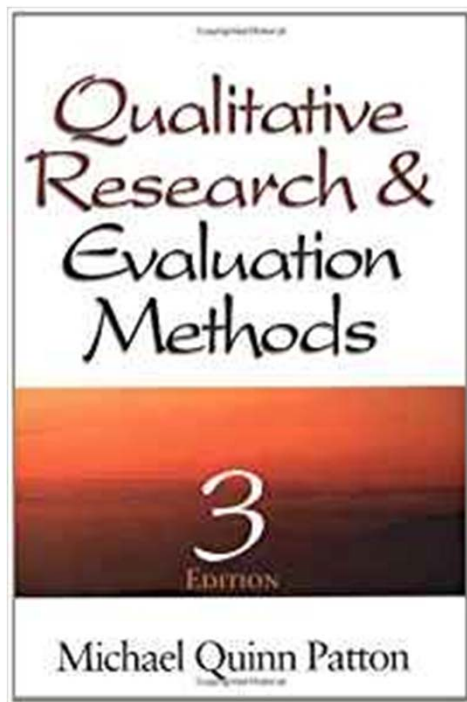


# How qualitative research can foster the spirituality of the chaplain

ENHCC June 2018

Rev. Nico A. van der Leer  
PhD researcher  
University of Humanistic Studies  
Utrecht, the Netherlands

# Research and spirituality



## Integration of spirituality on 3 levels

1. Personality – profession
2. Intellect - emotions
3. Chaplaincy - research

1. Personal experience counts, as it is important research data
2. Qualitative research is not only a rational and emotional experience but also a spiritual one
3. Qualitative research is comparable to the daily work of a chaplain

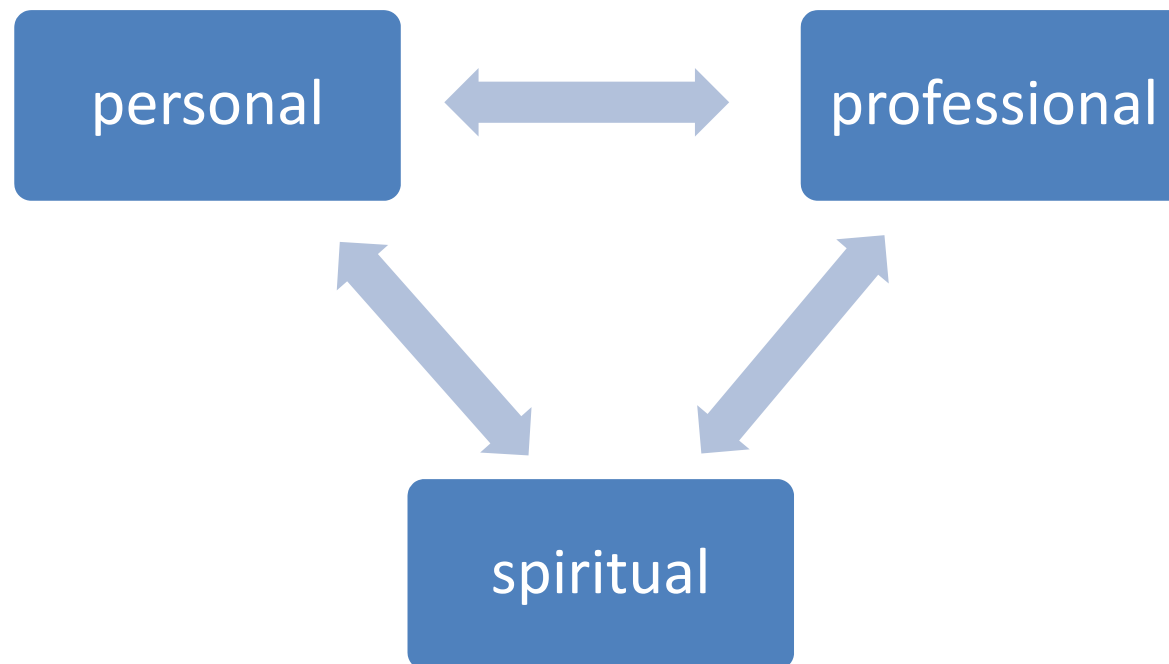
# My own experience counts, as it is important research data

Ellingson, L.L. (2006). Embodied Knowledge: writing researcher's bodies into qualitative health research. *Qualitative Health Research* 16: 298-310.

Todres, L. (2008). Being with that: the relevance of embodied understanding for practice. *Qualitative Health Research* 18: 1566-1573.

Clancy, A. (2011) An embodied response: Ethics and the nurse researcher, in : *Nursing Ethics* 18: 112-121

# Integration (1)

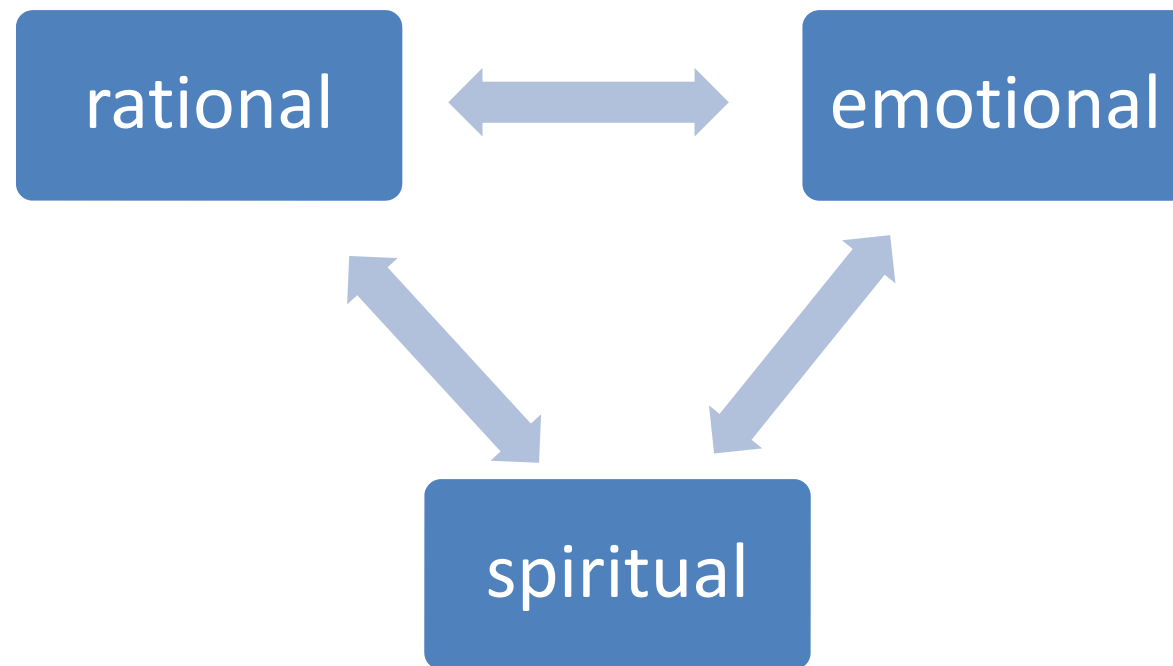


# Qualitative research is not only a rational and an emotional experience but also a spiritual one

Grossoehme, D.H. (2014). Research Methodology: Overview of Qualitative Research. *Journal of Health Care Chaplaincy*, 20: 109-122.

Rosenblatt, P. (2000). Qualitative research as a spiritual experience, in: *Gilbert, K.R. (ed.) The emotional nature of qualitative research*, 111-128. New York: CRC Press.

# Integration (2)



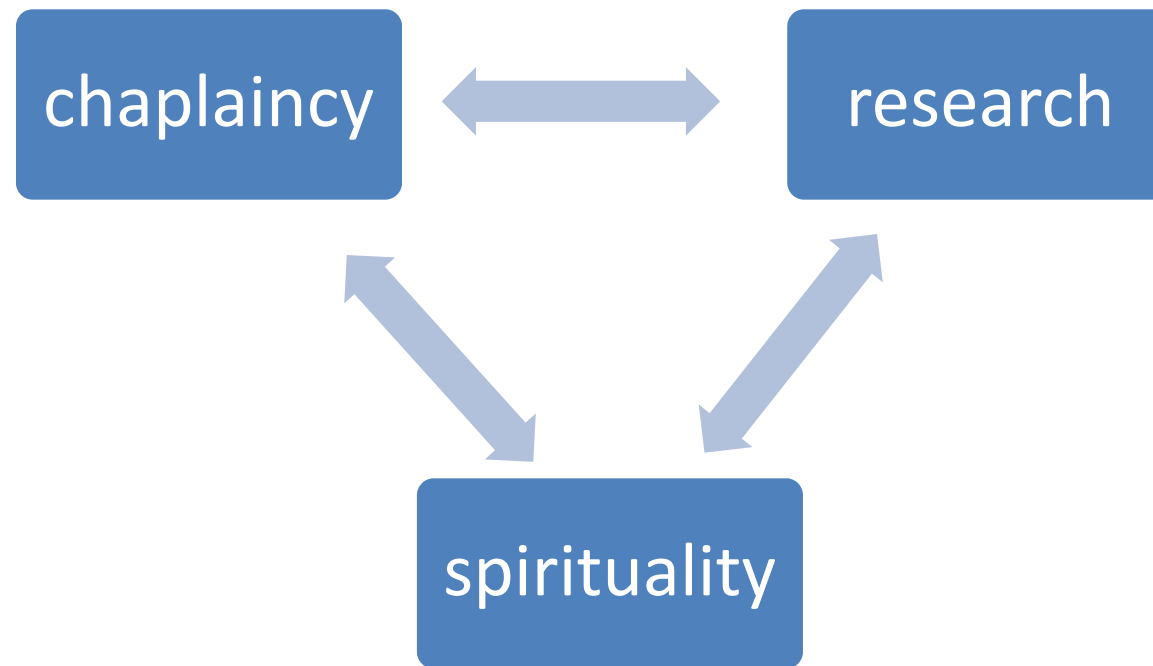


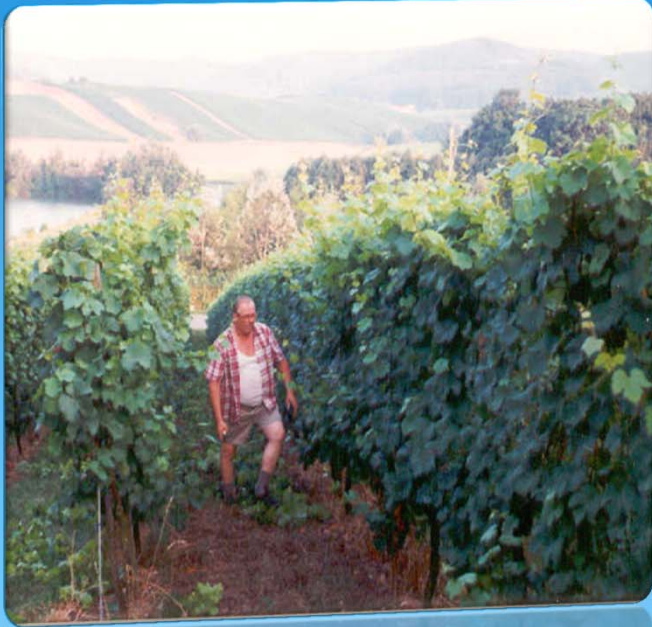
# Qualitative research is comparable to the daily work of a chaplain

Snowden, A., Telfer, I., Kelly, E. e.a. (2013). I was able to talk about what was on my mind. The operationalisation of person centred care. *The Scottish Journal of Healthcare Chaplaincy* 16: 14-24.

Grossoehme, D.H. (2011). Research as a chaplaincy intervention. *Journal of Health Care Chaplaincy*, 17: 97-99.

# Integration (3)





## The story of the vine



Thank you for your  
attention

What is your experience of being a  
chaplain-researcher?

How would you integrate chaplaincy,  
research and spirituality?