

Chaplains, Faith Communities and Belief Groups in a Scottish Context

Ewan Kelly

(Programme Director for Healthcare Chaplaincy
and Spiritual care, NHS Education for Scotland)

Definitions

Spiritual Care is usually given in a one to one relationship, is completely person centred and makes no assumption about personal conviction or life orientation.

Religious Care is given in the context of shared religious beliefs, values, liturgies and lifestyle of a faith community.

Spiritual care is not necessarily religious. Religious care should always be spiritual.

Spiritual care might be said to be the umbrella term of which religious care is a part. It is the intention of religious care to meet spiritual need.

Guidance on Spiritual Care and Chaplaincy in the NHS In Scotland
(Scottish Government 2009)

YOU KNOW, HOBBS, I CAN'T
FIGURE OUT THIS DEATH STUFF.



WHY DID THAT LITTLE RACCOON
HAVE TO DIE? HE DIDN'T
DO ANYTHING WRONG.



HE WAS JUST LITTLE! WHAT'S
THE POINT OF PUTTING HIM
HERE AND TAKING HIM
BACK SO SOON???

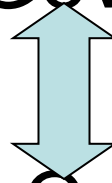


IT'S EITHER MEAN
OR IT'S ARBITRARY,
AND EITHER WAY
I'VE GOT THE
HEEBIE-JEEBIES.

WHY IS IT
ALWAYS NIGHT
WHEN WE
TALK ABOUT
THESE THINGS!

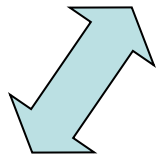


Scottish Government

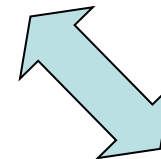


National Spiritual Care Development
Committee

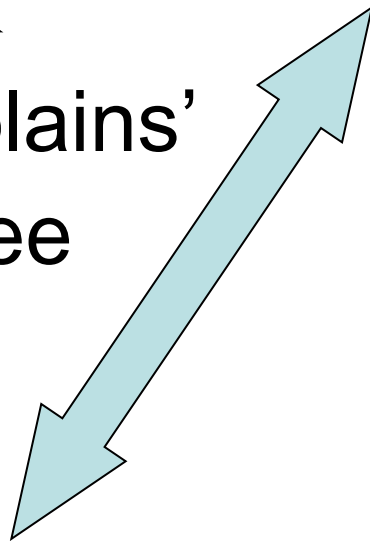
Committee



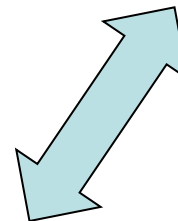
Lead Chaplains'
Committee



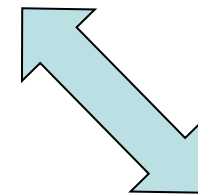
Chaplains'
Training Dev. Gp



Chaplaincy
Prof Bodies



Audit Gp



Research Gp

Relationship of Faith Communities and Belief Groups with Chaplains in Sp Care Development

Strategic Level – National/health board level

1. Critical conversation partners

- National level: NES and Lead Chaplains – collaborative leadership - in conversation with Scottish Government driving development
- Health Board Level : part of local Sp Care Committees



"Do you think of yourself as a spiritual person?"

Role of Faith Communities and Belief Groups in Sp Care

Strategic Level

2. Collaborative Partners

National Level

- Development of Educational Resources
eg *Multi-faith Resource for Healthcare Staff*
(NES, 2006)
- Reflective resources
eg collated sacred and secular poems, prayers
and prose (NES and Scottish Gov. 2011)

Chaplains and faith and belief groups

Strategic Level

2. Collaborative Partners

National Level

Moving model of sp care from crisis intervention to developing resilience and wellbeing

Eg Scottish Gov funding to dev community based listening services

Role of Faith Communities and Belief Groups in Sp Care

Operational Level (in Health Boards)

- Generic Chaplains employed directly by NHS (mainly but not all Christian – lay and ordained) – increasingly involved in non-religious/spiritual care
- RC Chaplaincy bought in
- Honorary Chaplains from all main faith traditions and belief groups where possible in specific health boards (incl. Humanist)

Role of Faith Communities and Belief Groups in Sp Care

Operational Level

- Chaplain refer patients, carers and staff with consent to faith communities or belief groups and vice versa
- Information Exchange and Educational Events – two way

Appointing Generic Chaplains

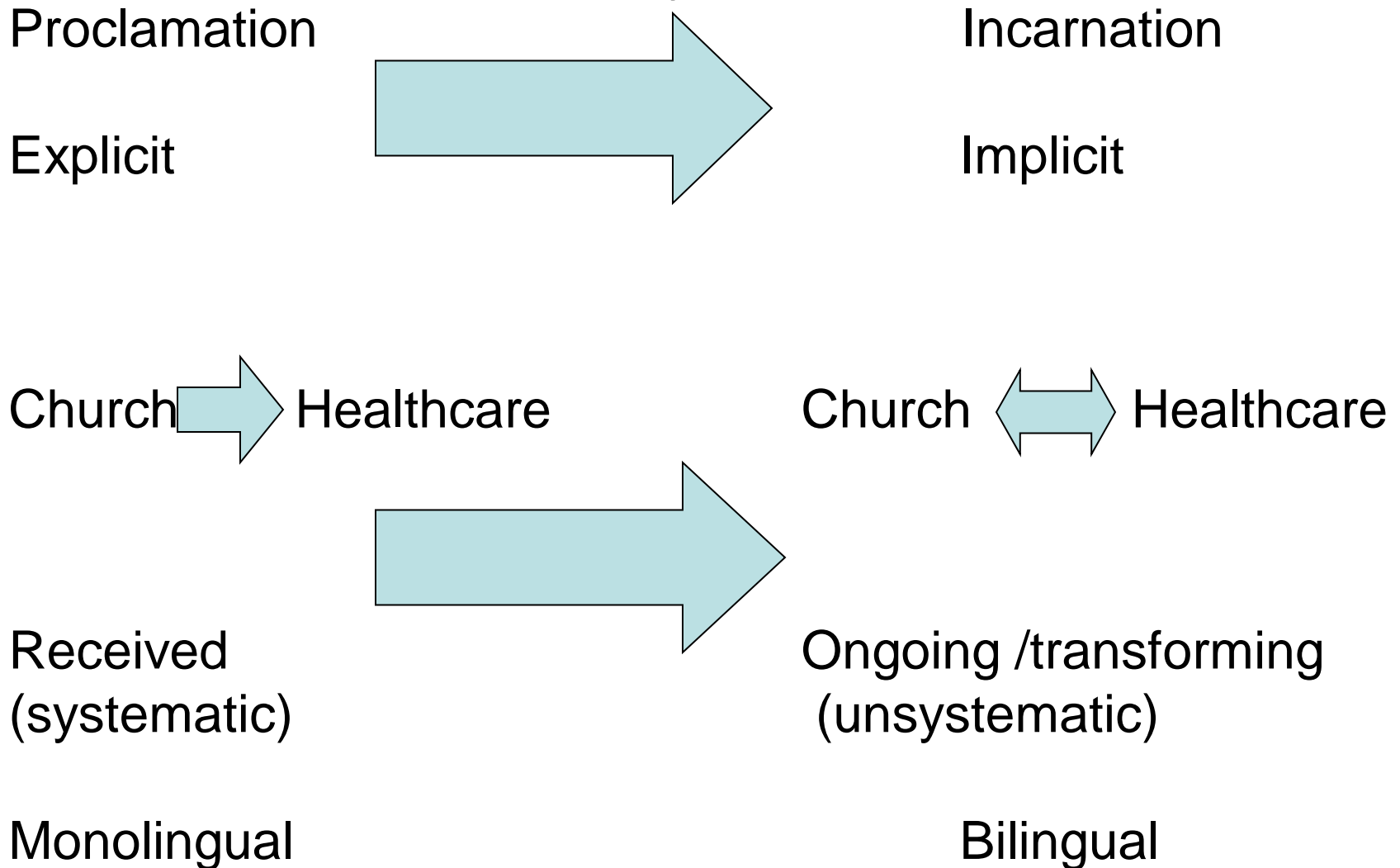
- No faith community representation on appointing committee
- Chaplaincy advisor
- Healthcare manager and senior healthcare professional(s)

Appointing Generic Chaplains

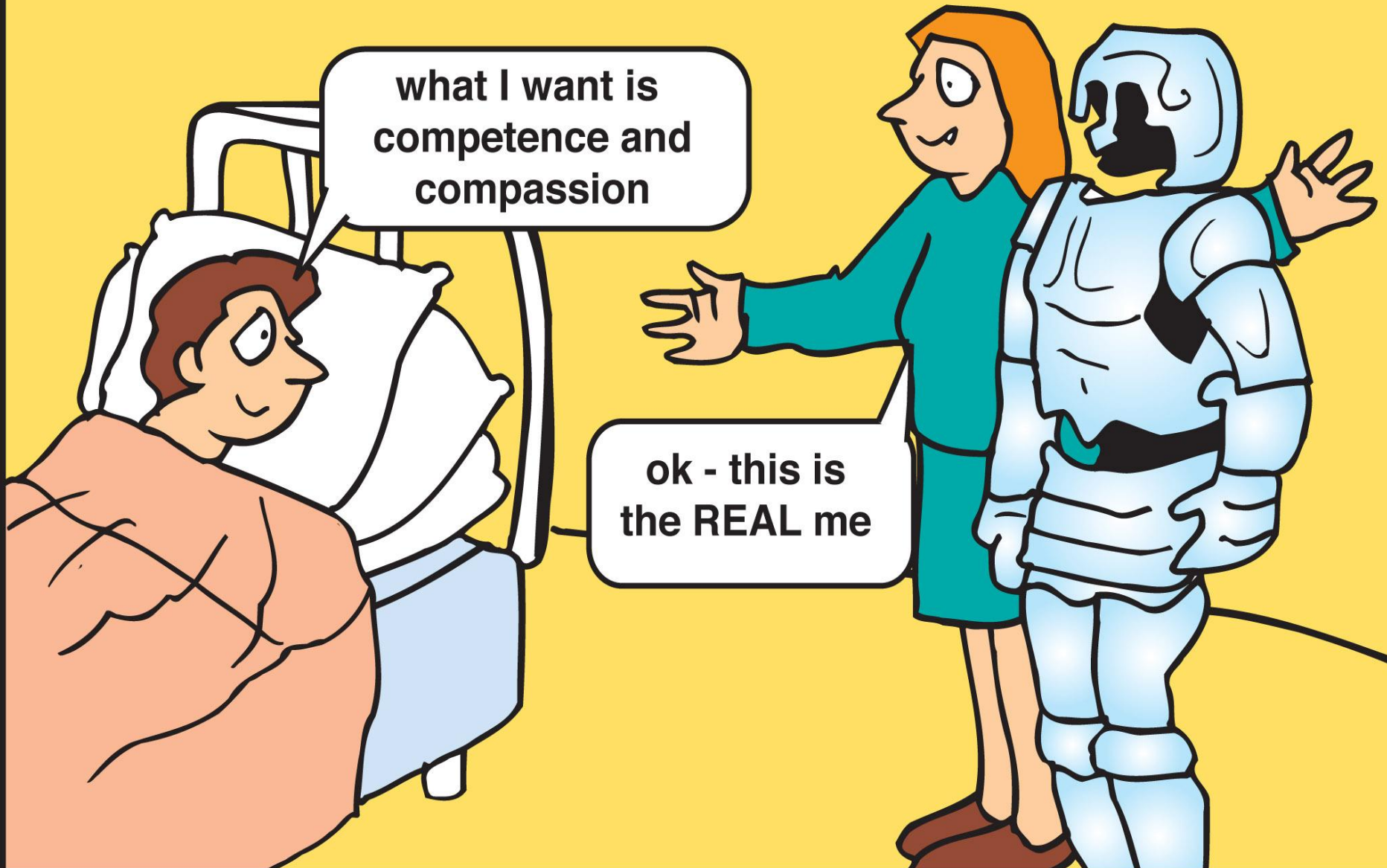
Appointment Requires:

- Theological/religious studies education
- Good standing with faith community/belief group – live spiritual practice /rootedness /support
- Post-grad Cert in Healthcare Chaplaincy (or willingness to complete)
- Ability and competency to provide sp care

Theological Developments in Chaplaincy in Scotland



Shedding the armour of professional facade



what I want is
competence and
compassion

ok - this is
the REAL me