

# Spiritual care in the electronic quality system and development of screeningtool.

# Everyday work in Møre and Romsdal

- Employees in the hospital
- Interdisciplinary approach
- Secular society – shyness to spiritual care
- Walk the hospital or respond to inquiries
- Screening spiritual needs and implement a understanding of the importance of adressing spiritual needs?



# The procedure – applies to all employees

## Purpose and scope

- Ensure patients and relatives access to spiritual care when receiving health care.

The guideline applies to all employees and aim to:

- Clarify the responsibilities and frameworks of health personnel.
- Guide health personnel in asking good questions as a starting point for conversation on the topic.
- Inform about the relevant referral if necessary.
- Inform about documentation of spiritual needs.

## Action

- Assess the patient's need for care
- Conversation based on the experience of being a patient.
- Use of conversation form «spiritual needs» -
- Use of HOPE - see related

If the patient expresses a / e need:

- Set aside time for a conversation with the patient about this
- Make an appointment for a conversation with a priest / deacon. Referral routines to the priest / deacon - see appendix.
- Measures aimed at the patient's needs are documented in the medical record.

0 = Not at all

10= at the most

1. It is difficult to share my thoughts and concerns related to illness with my loved ones.

0 1 2 3 4 5 6 7 8 9 10

2. I feel the need to talk more about how the disease affects my quality of life.

0 1 2 3 4 5 6 7 8 9 10

3. I find solace in the idea of a higher power.

0 1 2 3 4 5 6 7 8 9 10

4. I find it difficult to find meaning in everyday life.

0 1 2 3 4 5 6 7 8 9 10

5. I want to work with forgiveness and/or reconciliation with someone close to me.

0 1 2 3 4 5 6 7 8 9 10

6. Hope is important to me.

0 1 2 3 4 5 6 7 8 9 10

7. I often think about death.

0 1 2 3 4 5 6 7 8 9 10

8. Do you have a connection to a religious or other community that you want help to get in touch with??

Yes

No

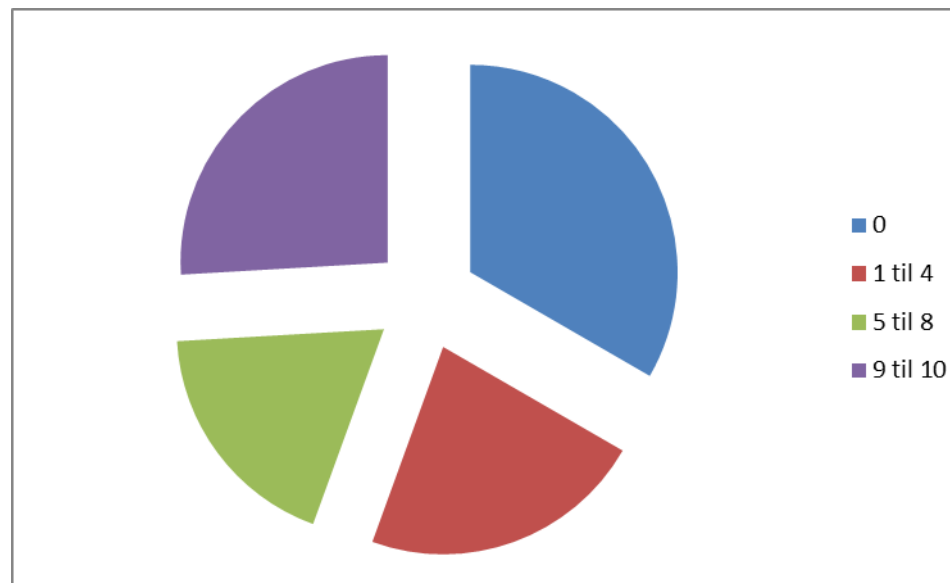
# Implementation of the guideline

- Information, information and information
- The political situation regarding spirituality
- Ethical reflections
- Research on the importance of spritual care in hospitals
- Implement in workflow
- Training in spiritual care



# I find solace in the idea of a higher power

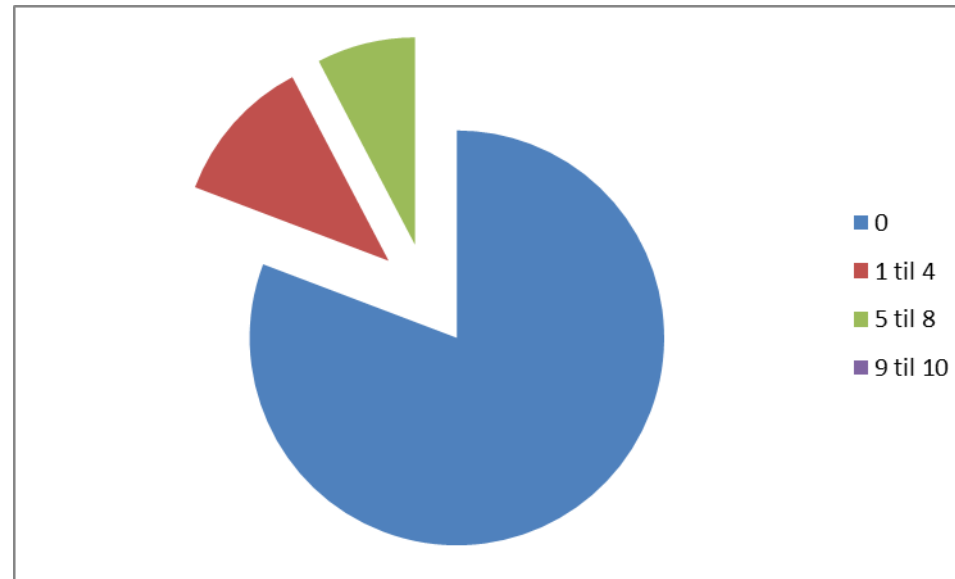
0	9
1 to 4	6
5 to 8	5
9 to 10	7





# I want help to get in contact with a representative from my own religious society.

0	21
1 til 4	3
5 til 8	2
9 til 10	0



# Conversation

- In what degree should healthcare reveal spiritual issues which patients do not express themselves?
- How do we best inspire healthcare to address spiritual care?
- How to train nurses and doctors in spiritual care?
  
- How to break through the secular shyness?
- Do screening tools do what they are designed to do?